

Data Science for Social Welfare

Jimmy Hickey

Winona State University

Pi Mu Epsilon

April 13th 2018



Data Science: More than a Buzzword

- Gathering
- Managing
- Analyzing
- Communicating



Examples!



Gathering

- Structured vs. Unstructured
- <https://data.seattle.gov/Public-Safety/Seattle-Police-Department-911-Incident-Response/3k2p-39jp>
- <https://usa.ipums.org/usa-action/variables/group>
- <https://www.thecurrent.org/playlist/2014-01-01/01>

Managing

- Cleaning
- Aggregating Data
- Feature Engineering & Dimension Reduction

Cleaning

Data Management

- The data set contained many missing values.
 - Imputed if possible
 - Infer the missing value to be zero by context or extrapolate it from other data
 - Set to “Unknown”
 - Such as in categorical survey data
 - Left missing
 - If filling it in would be misleading or unfounded
- Used models resistant to missing data

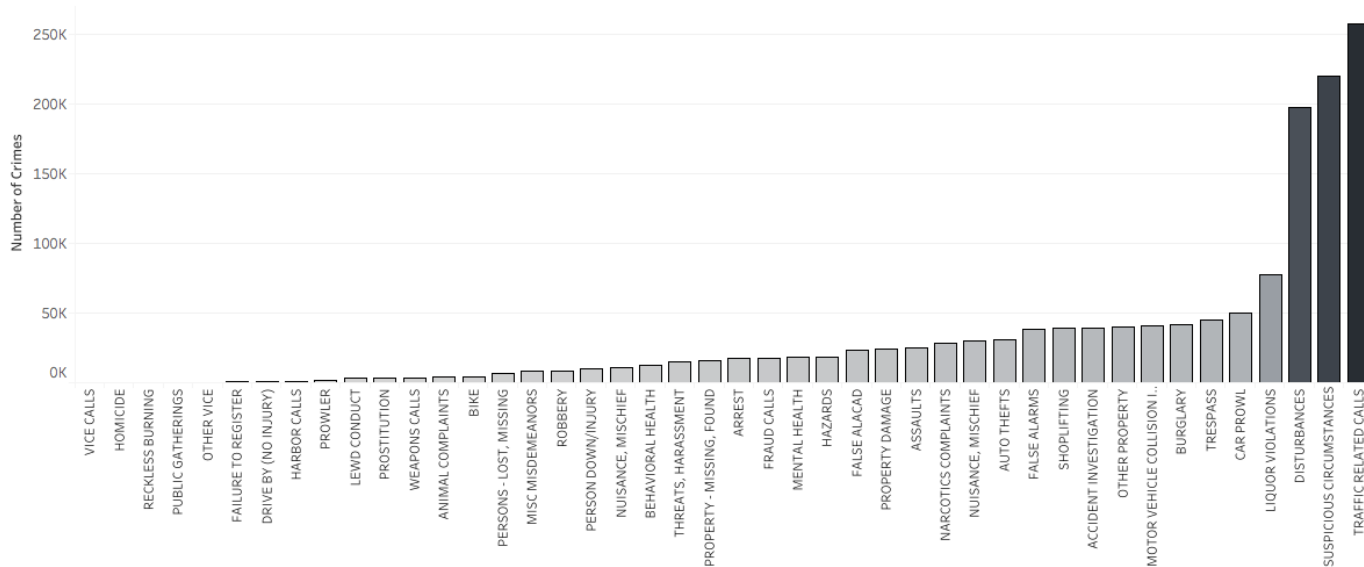
Pre-Aggregation

About the Data



We used data from the Seattle Police Department. We had a variety of variables to work with including the location of calls and the type of crime each reported.

Number of Different Crimes



A quick glance
at types of
crimes:

Post-Aggregation

Our Approach

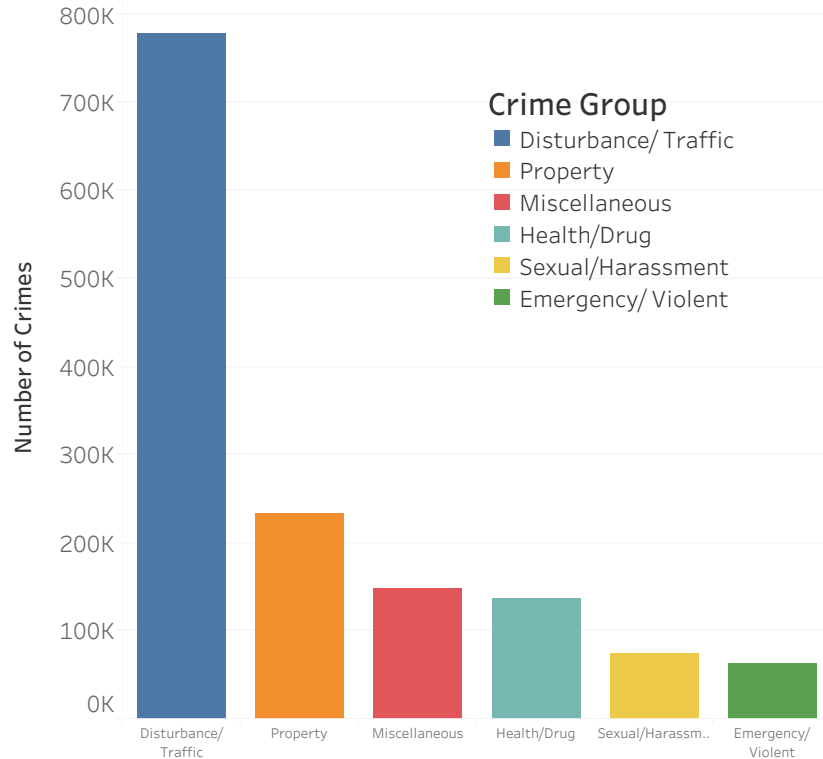


Our first inclination was to distill the crimes into smaller, more meaningful categories than was provided in the data set.

These categories are:

- Disturbance/Traffic
- Property
- Miscellaneous
- Health/Drug
- Sexual/Harassment
- Emergency/Violent

Number of Crimes by Group

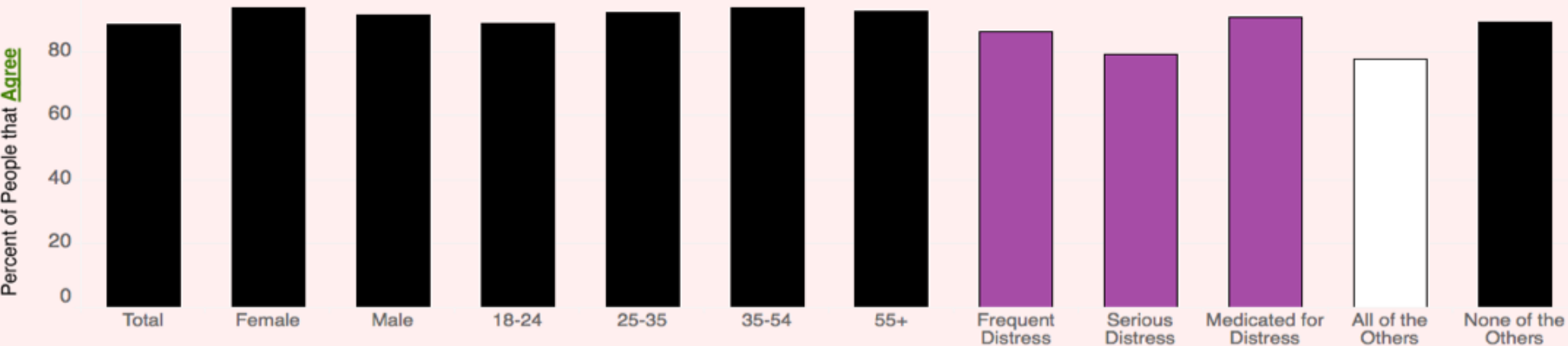


Analyzing

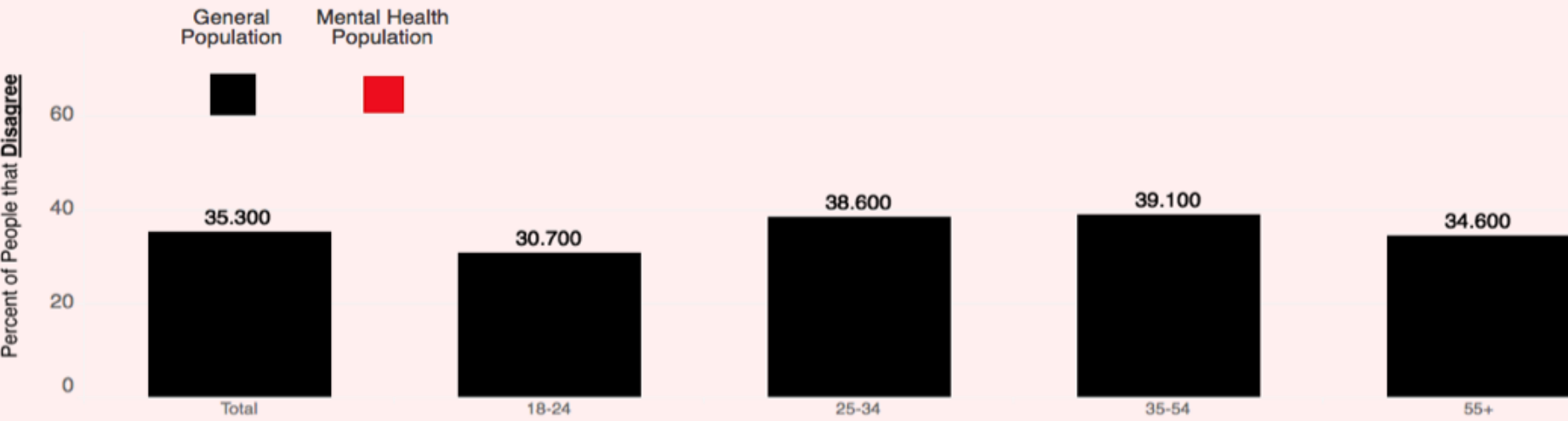
- Visualization
- Modeling
- Both!

Visualizing

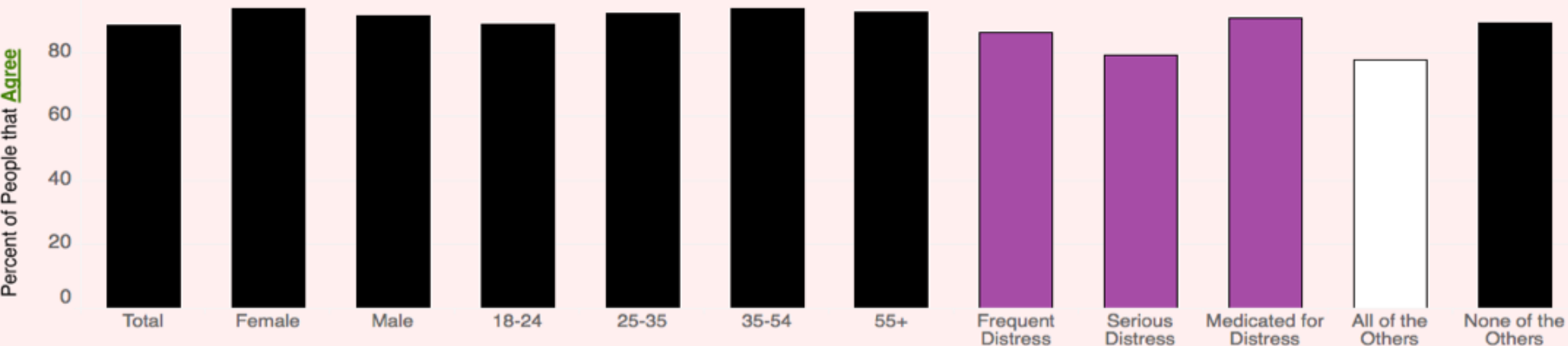
"Treatment can help persons with mental illness lead normal lives."



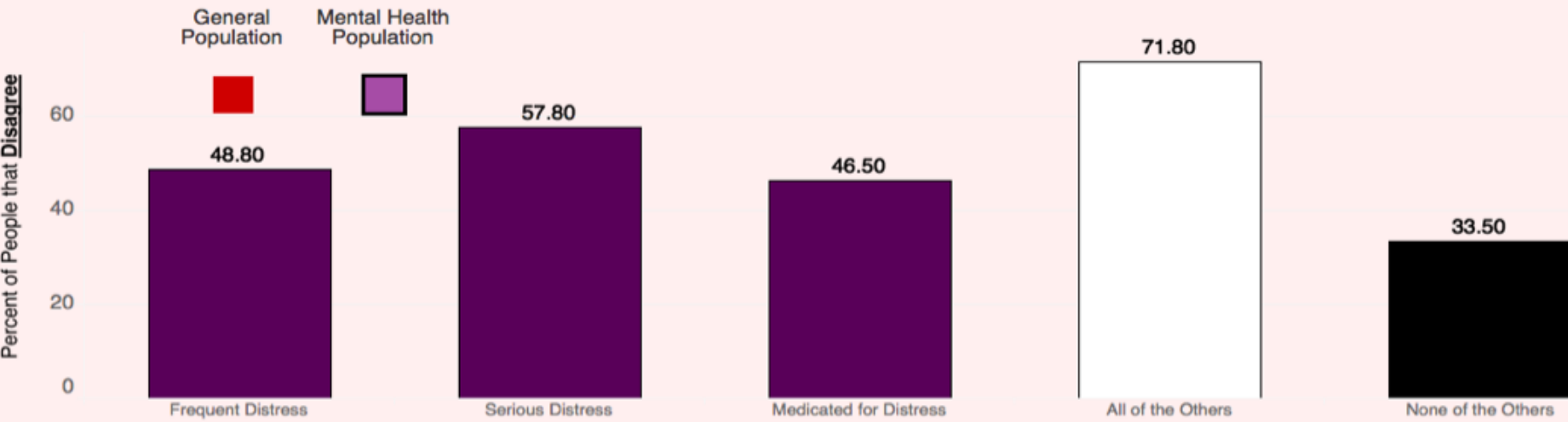
"People are generally caring and sympathetic to persons with mental illness."



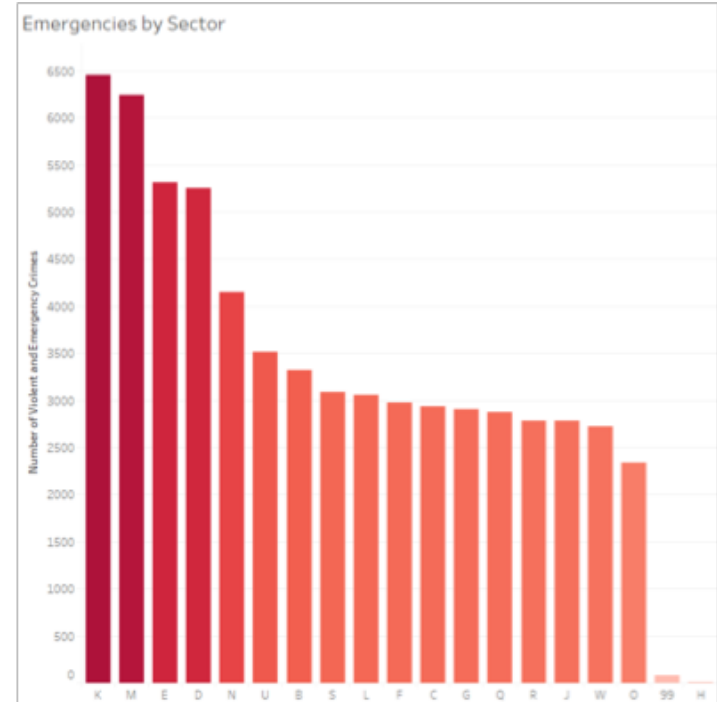
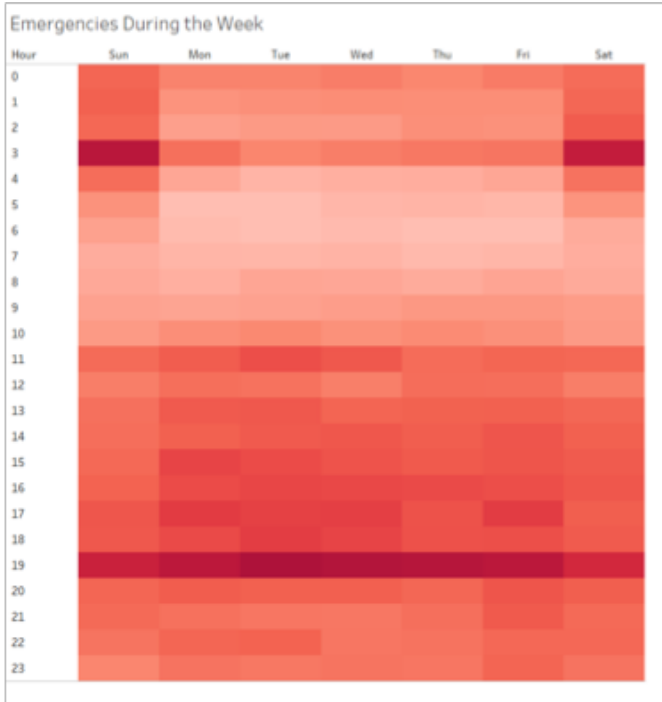
"Treatment can help persons with mental illness lead normal lives."



"People are generally caring and sympathetic to persons with mental illness."

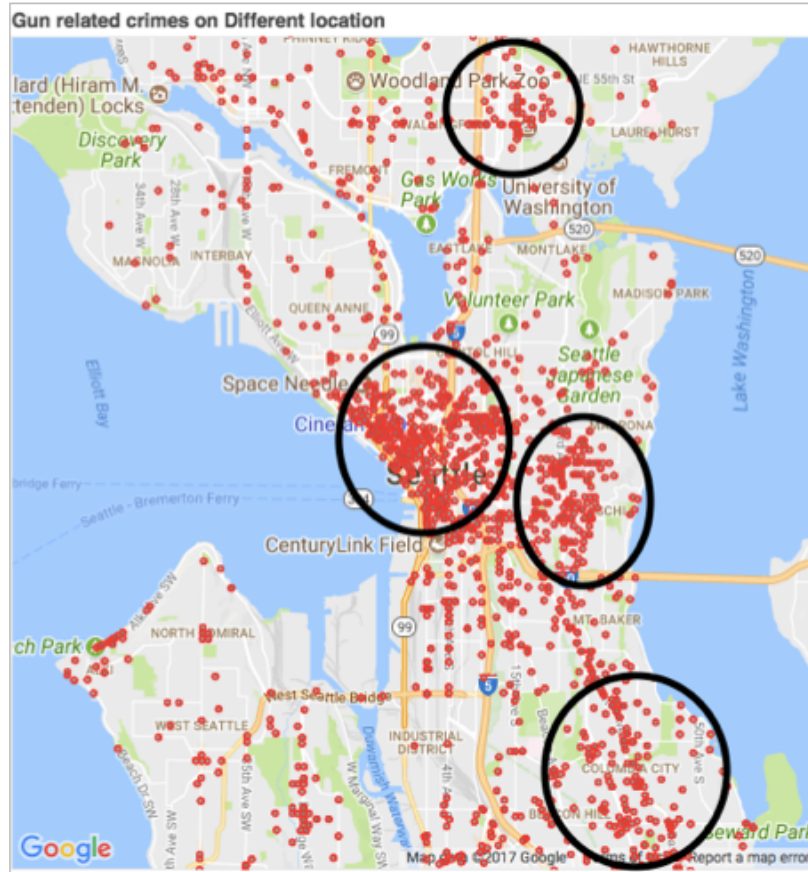


Emergency Calls



- Similar time patterns hold for emergencies.
- Emergencies are more prevalent in certain sectors.

Geospatial Visualization



Gun related crimes tend to be concentrated in certain areas.

There are four distinct clusters.

- Columbia City
- Downtown
- Squire Park
- University District

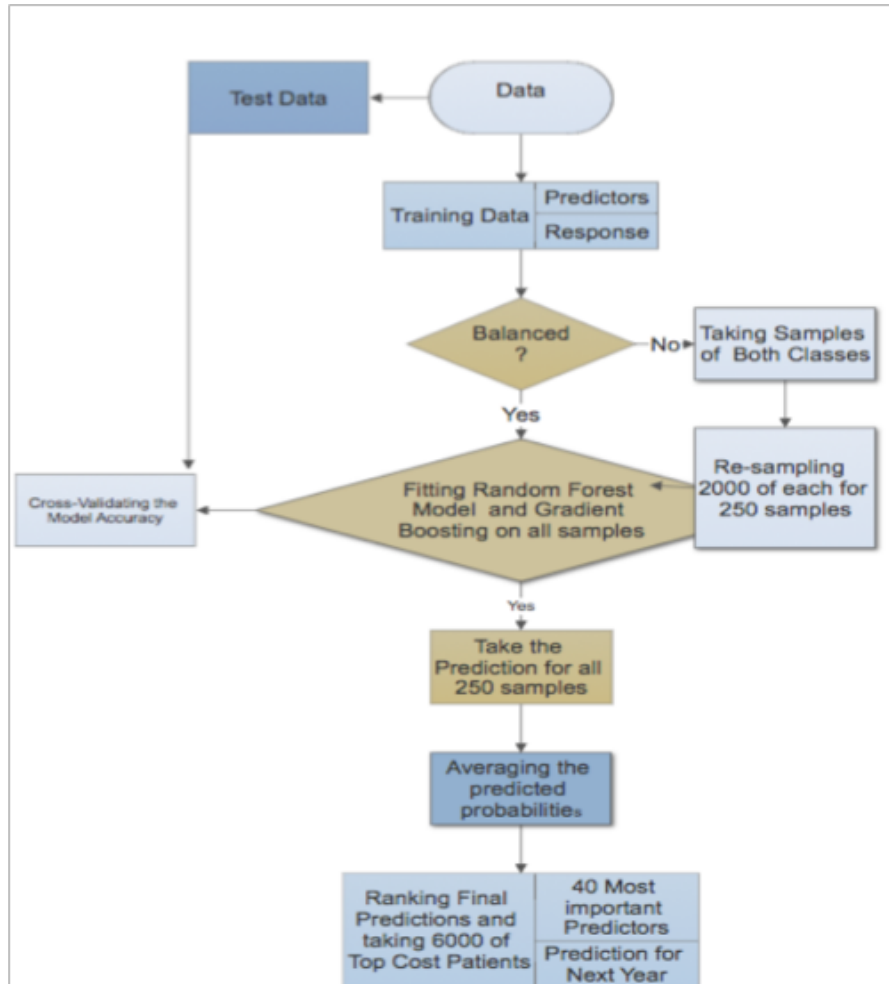
Modeling

FlowChart of algorithm used for the modeling.

Repeated sampling to balance the data and have decrease its effect.

The Random Forest helps decrease the variance in the data while gradient boosting classifiers to decrease the bias.

Model properly predicts around 55% of 6000 patients.



Both!

Variables that are Most Explanatory of Top 6000

Total Training Cost	In Top 6000 Training	Number of Office Visits	Number of Agonists	Factors influencing Health Status	Nervous System Diseases	
	Number of OutPatient Facility Visits	Cost of Indepenent Laboratory	Mean Cost Per Day Diabetic		Circulatory System Diseases	Ear Nose and Mouth Diseases
						Age
Number of Claims	Cost of Office Visits	Nutritional and Metabolic Diseases				
			Number of Diabetic Drugs per Year		Mental Diseases	
Number of Non-diabetic Drugs per Year	Cost of Outpatient Facility Visits	Respiratory System Diseases	Skin Diseases			
		Number of Other Drugs	No Result Lab	Number of Physician Visits		Number Of
Number of Drug Claims	Mean Cost Per Day Non-diabetic	Digestive System Diseases	Number of Lab Visits	Number of Biguanide Claims		
				High Lab Tests	Eye Diseases	Number of Muscle Relaxants

Communicating

- Visualizations
- Understanding your audience
- Recommendations

Using Data to Better Understand Mental Health

Jimmy Hickey

Using Medical Data to Predict Future Patient Expenditures

Will Diedrick, Jimmy Hickey, Akif Khan,
Kapil Khanal, Sean Wittenberg



Brad Erickson, Uzma Ghazanfar, Brad Hennes, Jimmy Hickey

TEAM 5



Midwest Undergraduate Data
Analytics Competition

Winona State University | www.MUDAC.org

Conclusion

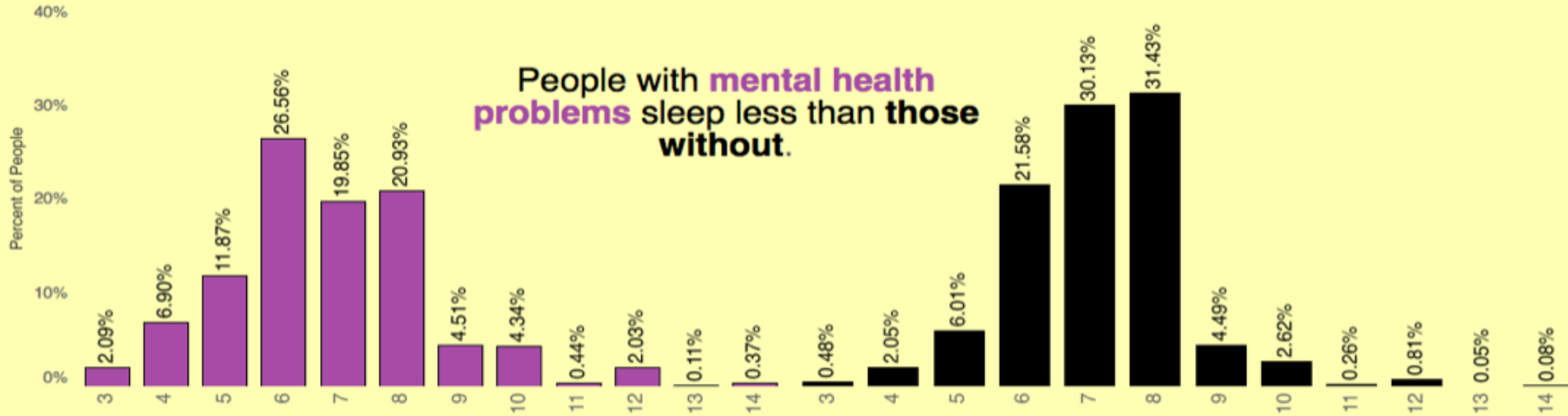
- The predictions from our model will help the employer understand the characteristics of diabetic employees that are likely to be high cost in the future.
- This insight will help allow the employer to identify these employees and focus on improving the health of these patients.
- Successfully identifying these employees will both reduce costs for the employer but also benefits the potentially high cost employees.

Improving one's mental health

These problems in society's treatment of those with mental health problems are not going to change overnight.

There are still many ways that one who feels stigmatized can help themselves.

Learn
Online Therapy
Animal Therapy
Sleep
Change Environment
Time Outdoors
Exercise
Managing Vices
Hobbies
Talk
Organize
Socialize
Meditation
Relax
Volunteering
Support Network
Diet
Therapy



Our Proposal for the City



Insight

Emergencies are highest in sector K around 7 P.M. during the late summer.

Gun related crimes tend to be clustered in certain areas.

Recommendations

The public should be made aware of the increased danger during these times and in these locations. A PSA campaign could disseminate this information effectively.

The Seattle Police Department should increase patrols in these hotspots during the most active times.

Acknowledgements

- Will Diedrick
- Brad Erickson
- Uzma Ghanzanfar
- Brad Hennes
- Akif Khan
- Kapil Khanal
- Sean Wittenberg

Questions?